

General Plan 2045: EIR Conservation & Biological Resources Stakeholder Meeting

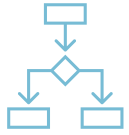
April 2, 2025



Presentation Overview

- Meeting Purpose
- California Environmental Quality Act (CEQA) Overview
- Known Biological Concerns
- Status of Citywide Incidental Take Permit
- Solicit Input

Purpose of Stakeholder Meeting



Provide an update on the CEQA process and timeline



Inform the community and agencies about the biological resources approach within the EIR



Address specific concerns regarding conservation and biological resources



Provide an update on Citywide Incidental Take Permit

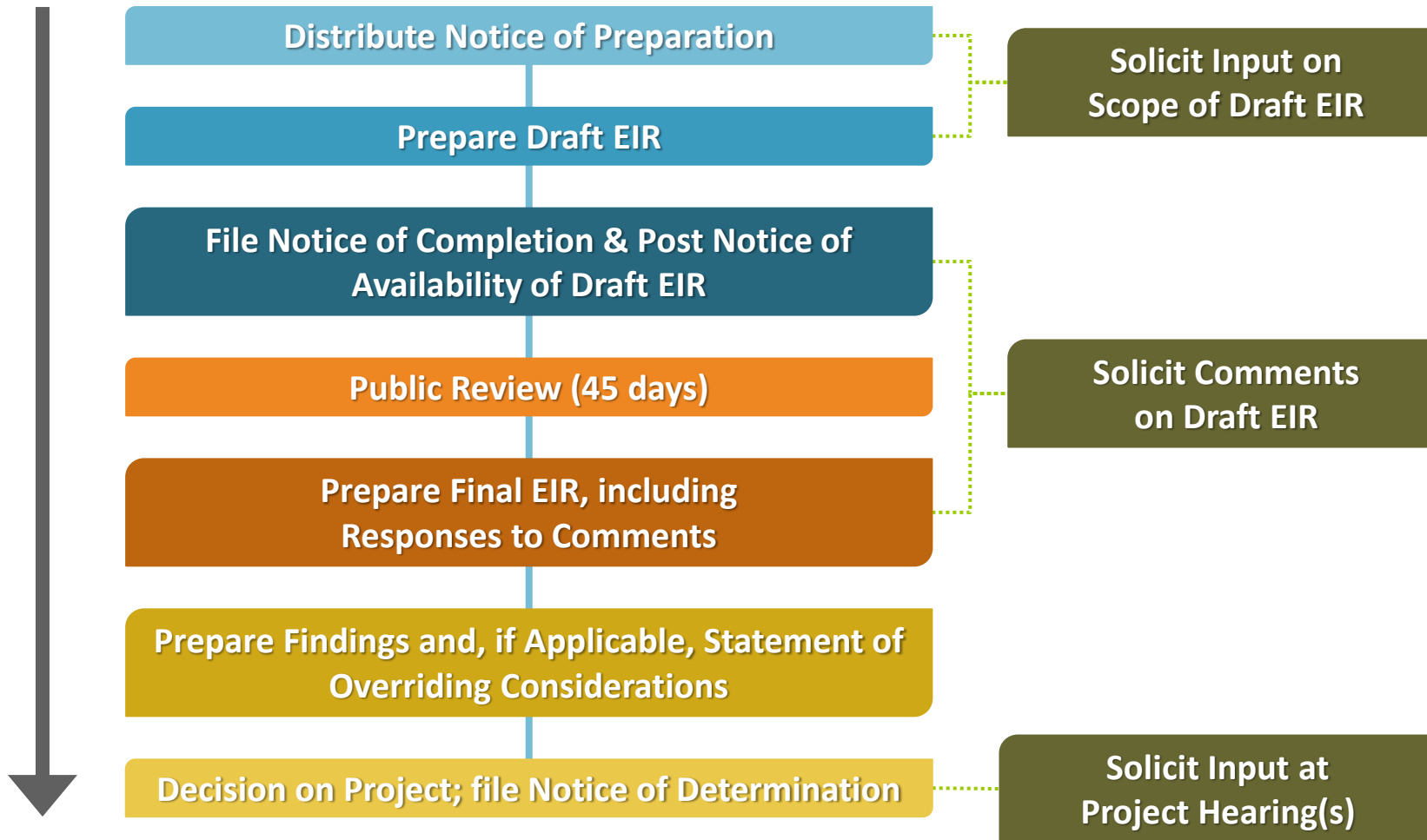


Solicit input regarding biological resources for the EIR

CEQA Overview

- The State's primary environmental protection law
- Requires public agencies to disclose environmental impacts of projects that have a physical effect on the environment
- CEQA has specific provisions to address the impacts of projects through an Environmental Impact Report (EIR)

CEQA Process



**We
Are
Here**

Note: The General Plan Scoping Meeting was conducted on 02/12/24. This meeting serves as an additional and optional meeting for the City to solicit feedback specifically regarding biological resources within the Plan Area.

What is an EIR?

- An Informational Document that:
 - Informs the decision-makers and the public
 - Discloses potentially significant environmental impacts
 - Identifies mitigation measures
 - Considers feasible alternatives

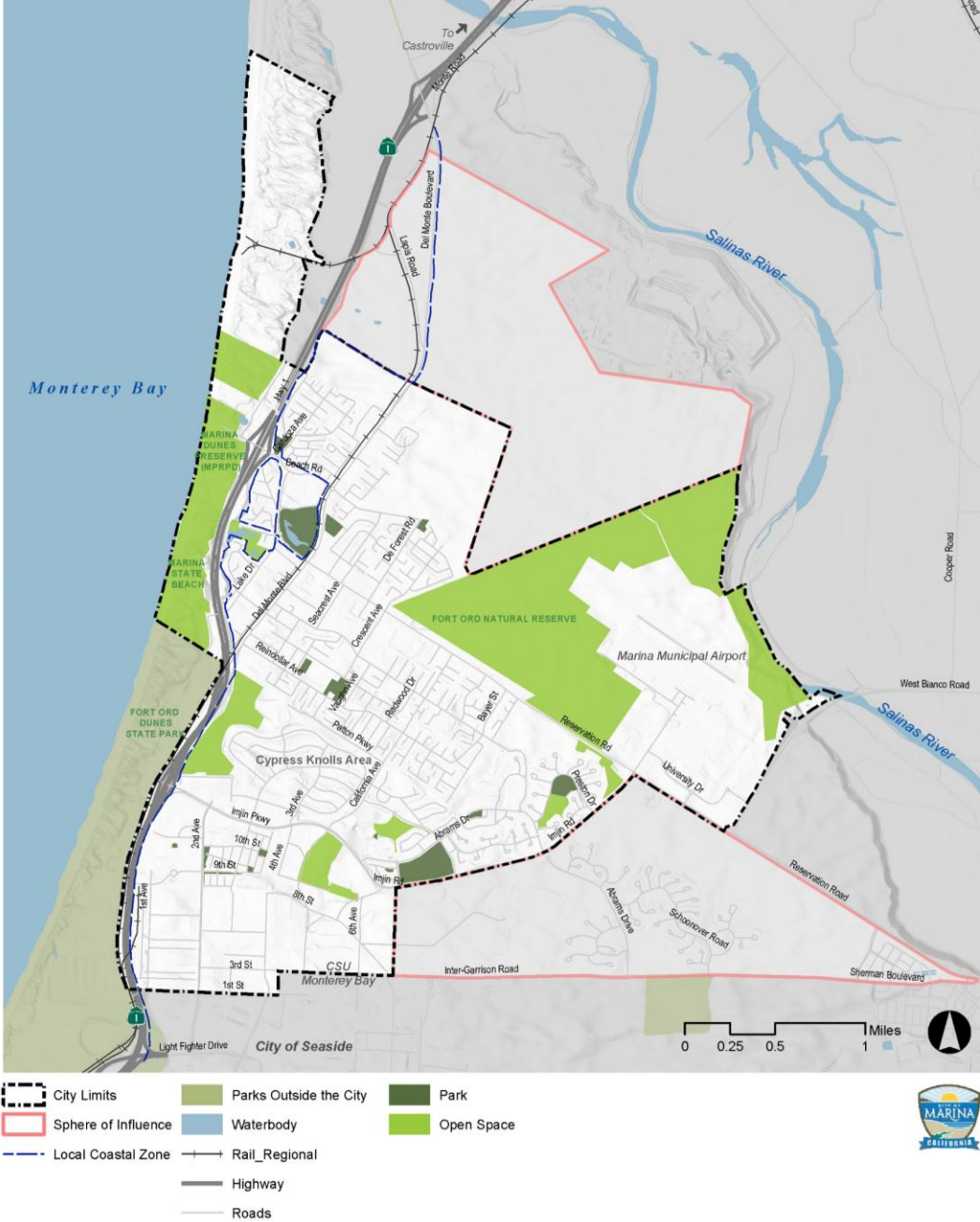
How Will Biological Resources be Addressed?

- The EIR addresses key concerns about biological resources, including cumulative impacts
- It requires a programmatic approach to assess impacts across the Plan Area and General Plan term
- Rincon will review existing site information, scientific literature, and conduct surveys for sensitive species and habitats
- The EIR analysis will outline project impacts per CEQA guidelines and discuss federal and state endangered species regulations



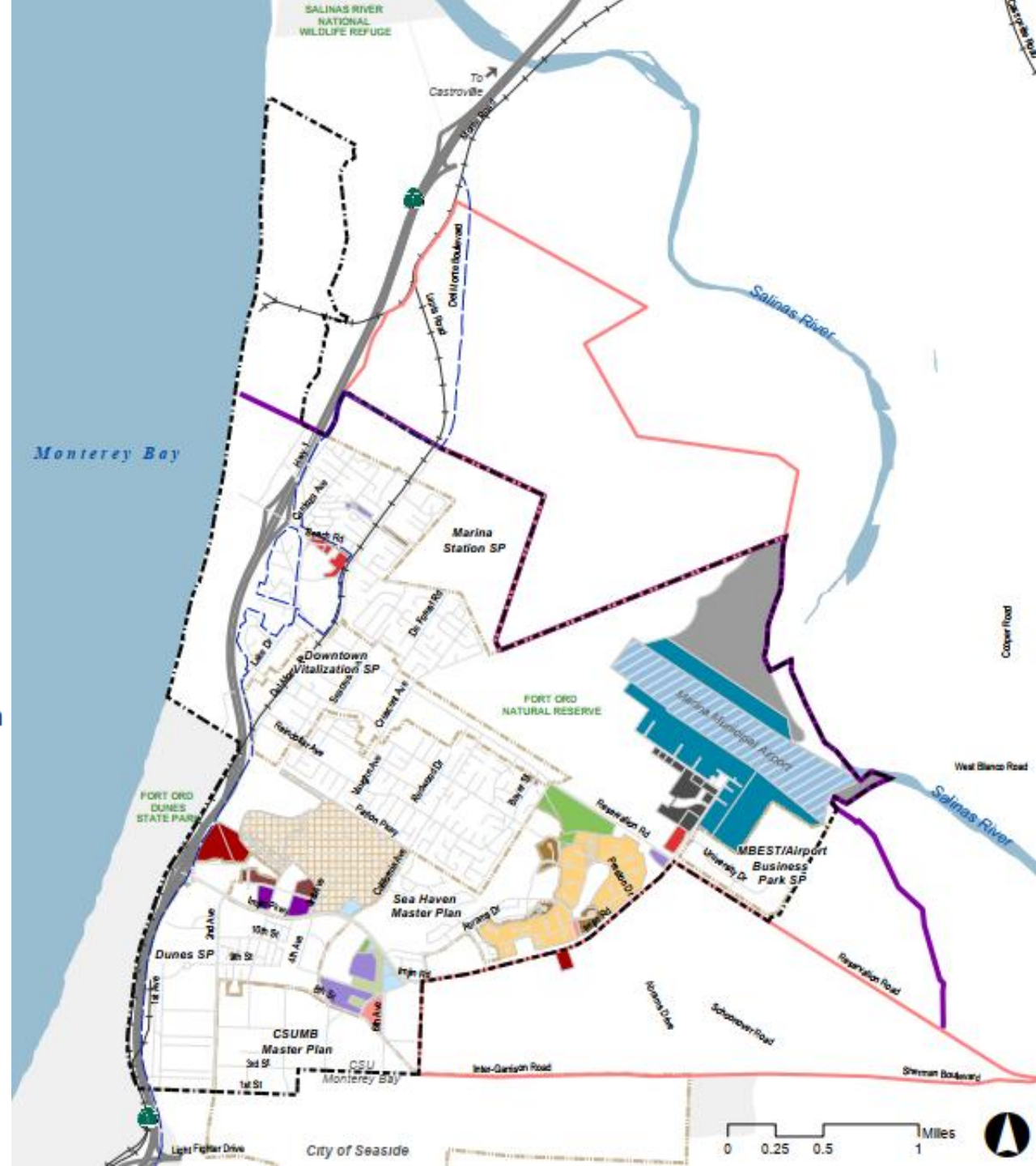
Planning Boundaries

- City Limits
 - Existing city boundary, ~5,660 acres
 - City controls land use regulations
- Sphere of Influence (SOI)



Proposed Land Use Changes

- | | |
|--|---|
|  Local Coastal Zone |  Medium Density Residential |
|  City Limits |  High Density Residential |
|  Sphere of Influence |  Neighborhood Commercial |
|  Urban Growth Boundary |  Visitor Serving Commercial |
|  Rail_Regional |  Regional Retail |
|  Specific Plan Area |  Office/R&D Low |
|  Low Density Residential |  Office/R&D High |
|  Mixed Use |  Public Facility - Education |
|  Future Specific/Master Plan Area |  Public Facility - Civic |
|  Specific/Master Plan Area |  Parks & Recreation |
|  Light Industrial/Flex |  Open Space |
|  Aviation Support Low |  UGB Open Space |
|  Aviation Support High |  Waterbody |
|  Public Facility - Airfield |  Parks Outside the City |



Known Biological Concerns - *Monterey Gilia*

- Located within sensitive maritime chaparral habitat in undeveloped areas of the Plan Area.
- Classified as a threatened species under the California Endangered Species Act and endangered under the Federal Endangered Species Act
- Key threats:
 - Habitat loss
 - Non-native plants
 - Habitat succession
 - Climate Change
- The EIR will analyze potential impacts to this species from development, especially regarding development that may occur within undeveloped areas of the Plan Area
- The EIR will include avoidance, minimization, and mitigation measures to fully mitigate impacts to the species.



Known Biological Concerns - *Monterey spineflower*

- Located within sandy openings throughout the Plan Area
- Classified as threatened under the Federal Endangered Species Act
- Key threats:
 - Habitat loss
 - Non-native plants
 - Habitat succession
- The EIR will analyze potential impacts from development within maritime chaparral habitat in the Plan Area, focusing on how such development may affect the species



Known Biological Concerns - *Seaside bird's-beak*

- Located within open areas at the airport within the Plan Area
- Classified as endangered under the California Endangered Species Act
- Key threats:
 - Habitat loss
 - Non-native plants
 - Habitat fragmentation
- The EIR will analyze potential impacts to this species from development, especially regarding development that may occur within the airport portion of the Plan Area



Known Biological Concerns - *Crotch's bumble bee*

- Potentially located within open areas with flowering plants throughout the Plan Area
- Classified as a candidate endangered species under the California Endangered Species Act
- Key threats:
 - Habitat loss
 - Toxins and disease
 - Competition
- The EIR will analyze potential impacts to this species from development, especially regarding development that may occur within undeveloped areas of the Plan Area



Known Biological Concerns - *Smith's blue butterfly*

- Located within coastal dunes and open areas at the airport containing buckwheat host plants within the Plan Area
- Classified as endangered under the Federal Endangered Species Act
- Key threats:
 - Habitat loss
 - Non-native plants
 - Habitat fragmentation
- The EIR will analyze potential impacts to this species from development, especially regarding development that may occur within the airport portion of the Plan Area



Known Biological Concerns - *California tiger salamander*

- Located within open areas at the airport and east side of the Plan Area
- Classified as a threatened species under the California Endangered Species Act and Federal Endangered Species Act
- Key threats:
 - Habitat loss
 - Hybridization with non-native barred salamander
 - Climate change
- The EIR will analyze potential impacts to this species from development, especially regarding development that may occur within the airport and east side of the Plan Area



Known Biological Concerns - *Burrowing owl*

- Located within coastal dunes and open areas at the airport containing buckwheat host plants within the Plan Area
- Classified as a candidate endangered species under the California Endangered Species Act
- Key threats:
 - Habitat loss
 - Non-native plants
 - Habitat fragmentation
- The EIR will analyze potential impacts to this species from development, especially regarding development that may occur within the airport portion of the Plan Area



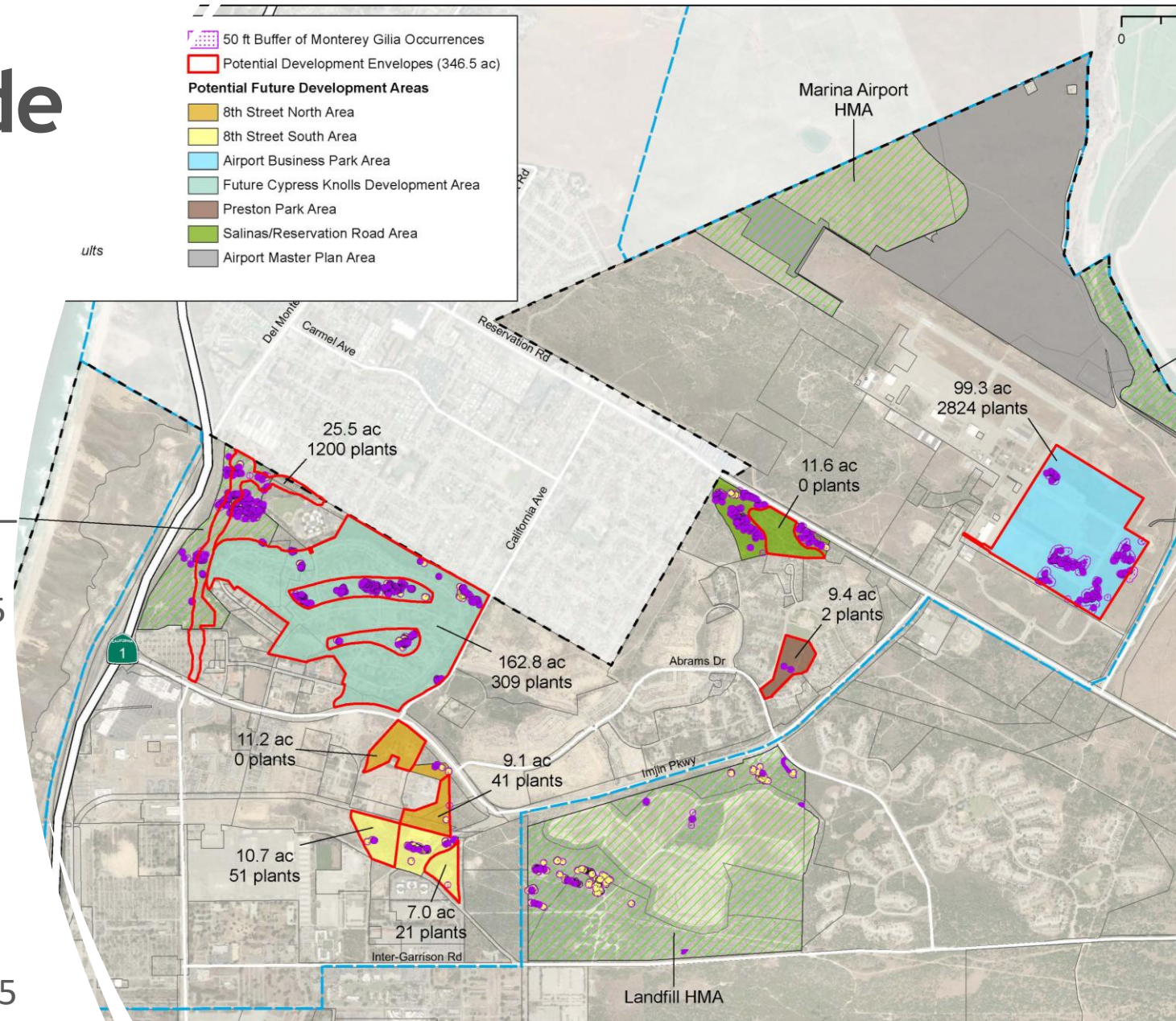
Status of Citywide Incidental Take Permit

ITP

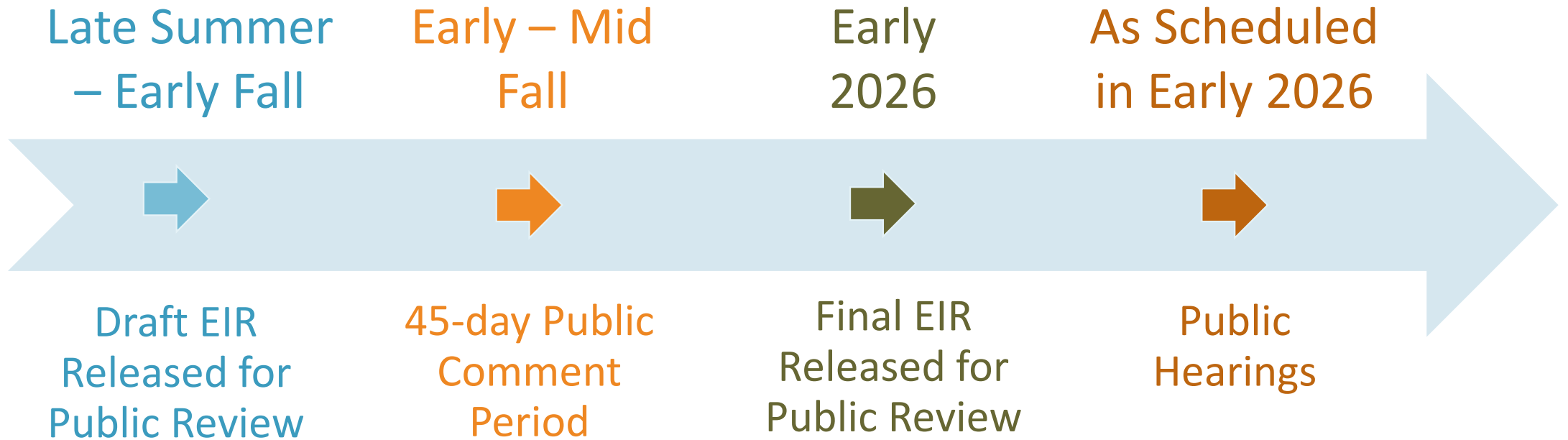
- Develop Mitigation Strategy for Permit Application – Winter 2025
- Prepare and Submit Permit Application – Spring 2025
- Permit Application Complete – Fall 2025
- Permit Issuance – Winter 2025/26
- Habitat Management Lands Package Requirements – Summer 2026
- On-going Meetings with Resource Agencies and Updates to Council/Public

Resource Management Plan

- Admin Draft stage
- Public Draft available late summer 2025



EIR Timeline



We Welcome Your Comments

- Other biological resources to be evaluated in the EIR
- Potential mitigation measures
- Suggested alternatives to be considered

Next opportunity for input: Public Draft EIR circulation period (late summer-early fall 2025)

Thank you for
participating!



RINCON CONSULTANTS, INC.
Environmental Scientists | Planners | Engineers